

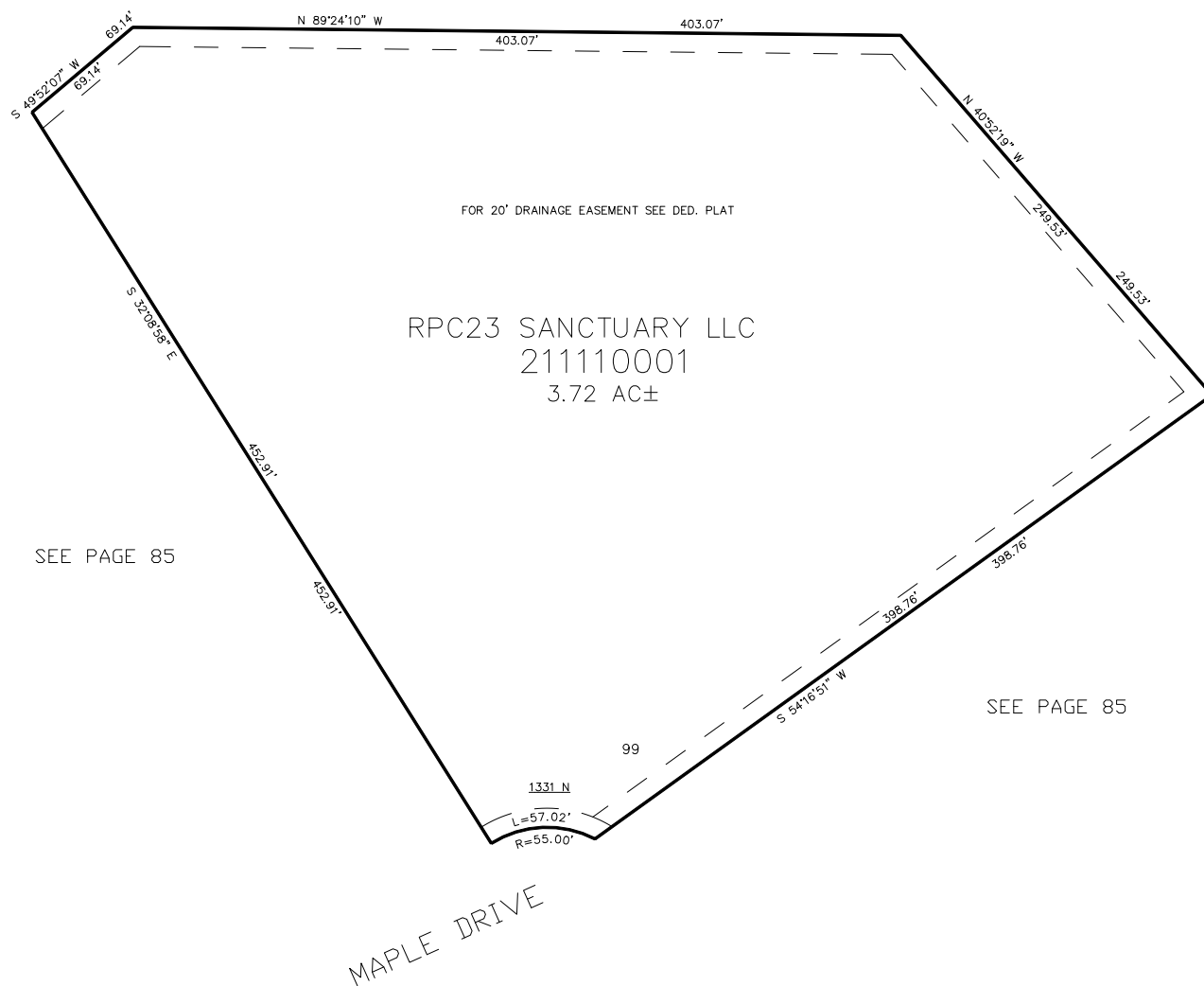
PART OF THE SE.1/4, OF SECTION 4, T.6N., R.2E., S.L.B. & M.
GREEN HILLS ESTATES PHASE No. 6 LOT 99 – 1ST AMENDMENT

IN WEBER COUNTY

TAXING UNIT: 231

SCALE 1" = 50'

SEE PAGE 85



10' UTILITY & DRAINAGE EASEMENTS EACH
 SIDE OF PROPERTY LINES AS INDICATED
 BY DASHED LINES EXCEPT AS OTHERWISE
 SHOWN.

FOR COMPLETE ENG DATA SEE
 ORIGINAL DEDICATION PLAT IN
 BOOK 64, PAGE 21 OF RECORDS.